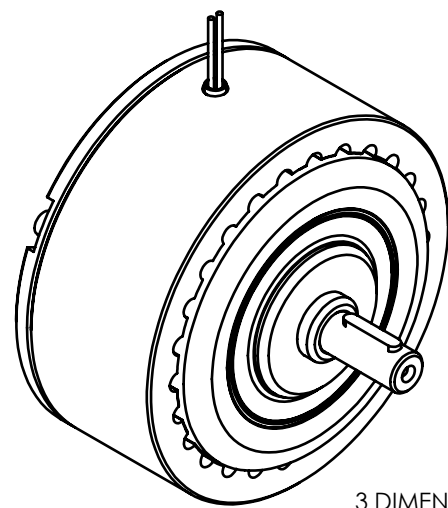
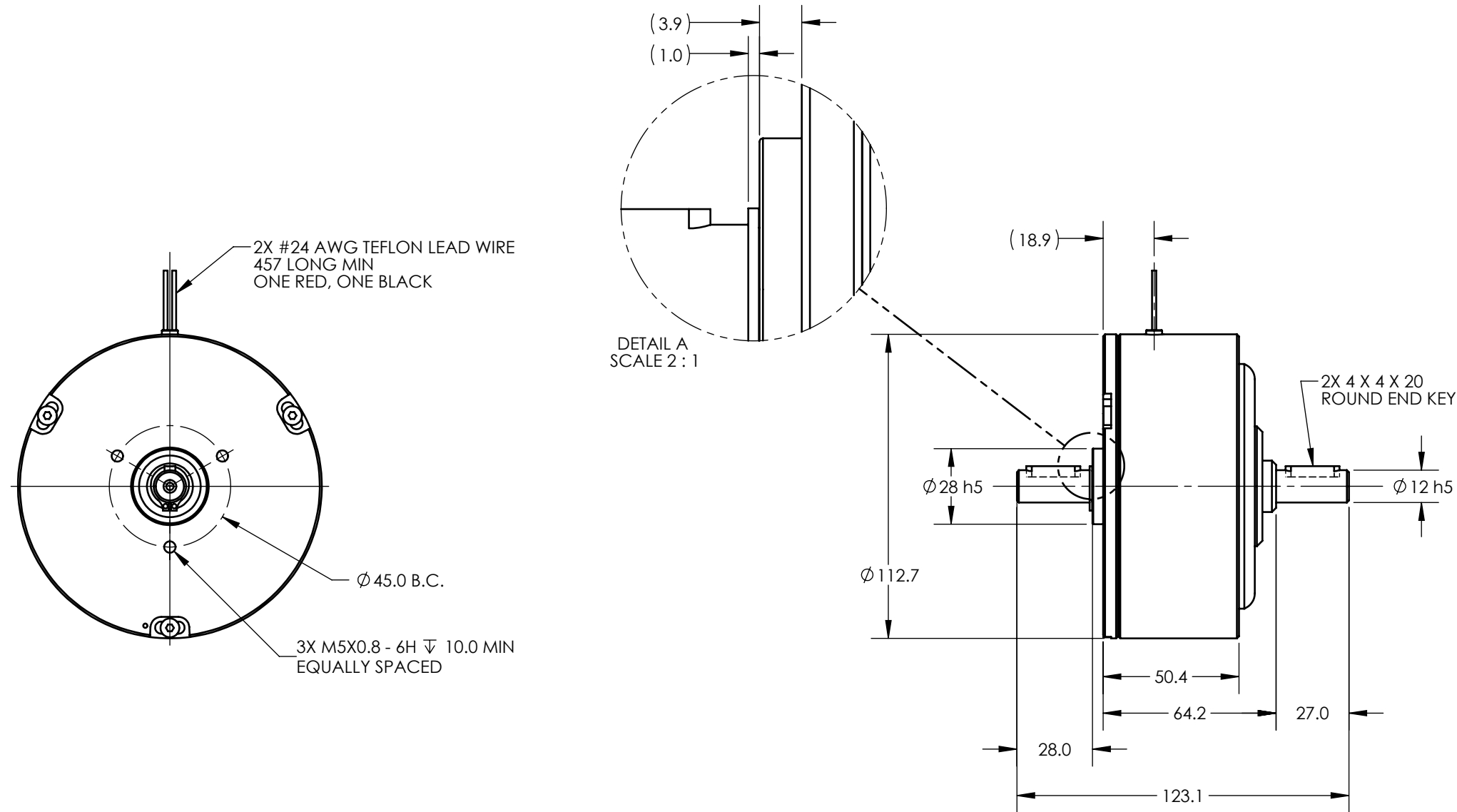


SOLID MODEL AVAILABLE

MODEL	COIL NUMBER	STOCK CODE	MINIMUM TORQUE AT RATED CURRENT (Nm)	RATED CURRENT (mA)	RESISTANCE ±10% @ 25°C (ohms)	VOLTAGE (Vdc)	NOMINAL POWER (watts)	MAXIMUM SPEED (RPM)	KINETIC POWER RATINGS		DE-ENERGIZED DRAG TORQUE @ 1000 RPM (Nm)	EXTERNAL INERTIA (kg cm ²)	ANGULAR ACCELERATION (rad/s ²)
									5 MINUTE (watts)	CONTINUOUS (watts)			
HB-250M	-1 (90 Vdc)	004811	1.75	89	957	84.9	7.54	10,000	450	110	7.77 X 10 ⁻³	3.45	5,070
	-2 (24 Vdc)	003808	1.75	270	96	25.9	7.00						
	-3 (12 Vdc)	004681	1.75	533	24	12.8	6.83						



3 DIMENSIONAL VIEW
SCALE 1 : 2

INSTALLATION DRAWING

MATERIAL:	DESIGN	-	-		MAGTROL INC. 70 GARDENVILLE PKWY, W. BUFFALO, NEW YORK 14224-1322
-	DRAWN	AJC	05/21/02		
FINISH:	CHECKED	DTW	05/21/02	TITLE: HB-250M HYSTERESIS BRAKE	
THIRD ANGLE PROJECTION	UNLESS OTHERWISE SPECIFIED: DIMENSIONS ARE IN MILLIMETERS DIAMETERS CONCENTRIC: .08 TIR FACES PERPENDICULAR: .08 INTERPRETATION PER ASME Y14.5M-1994 REMOVE ALL BURRS AND BREAK SHARP EDGES 0.13/0.25 X 45° INSIDE CORNERS TO BE R 0.5 MAX TOLERANCES: .X ± .25 X ± .4 .XX ± .13 X° ± 1° SURFACE FINISH 3.2 µm MAX			USED ON: - SIMILAR TO: - DWG NO: HB-250M REV C	
THIS DRAWING AND SPECIFICATION CONTAINS PROPRIETARY INFORMATION TO MAGTROL INC. ANY DISCLOSURE OR REPRODUCTION OF THIS DOCUMENT WITHOUT WRITTEN AUTHORIZATION FROM MAGTROL INC. IS EXPRESSLY PROHIBITED				SIZE B	SCALE 1:4