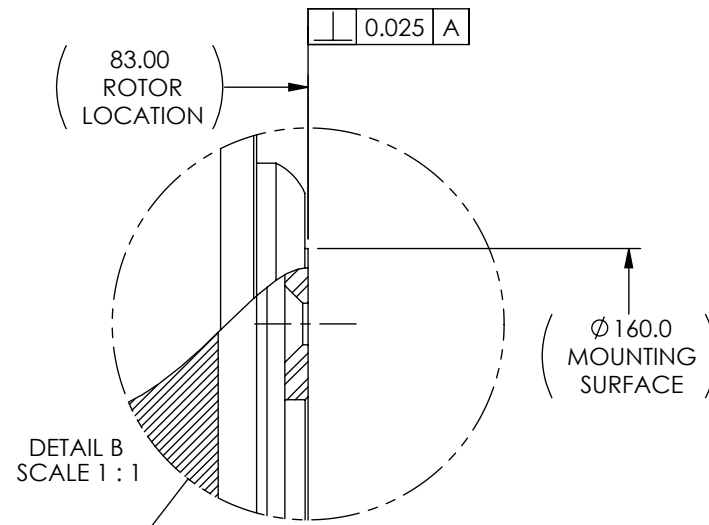


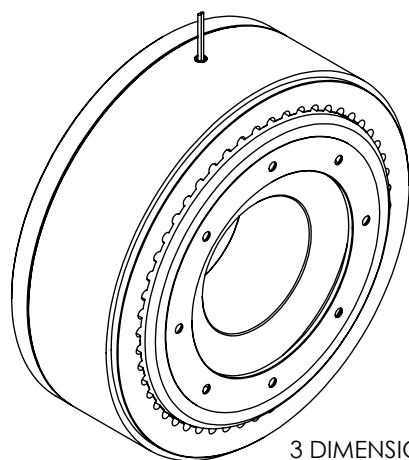
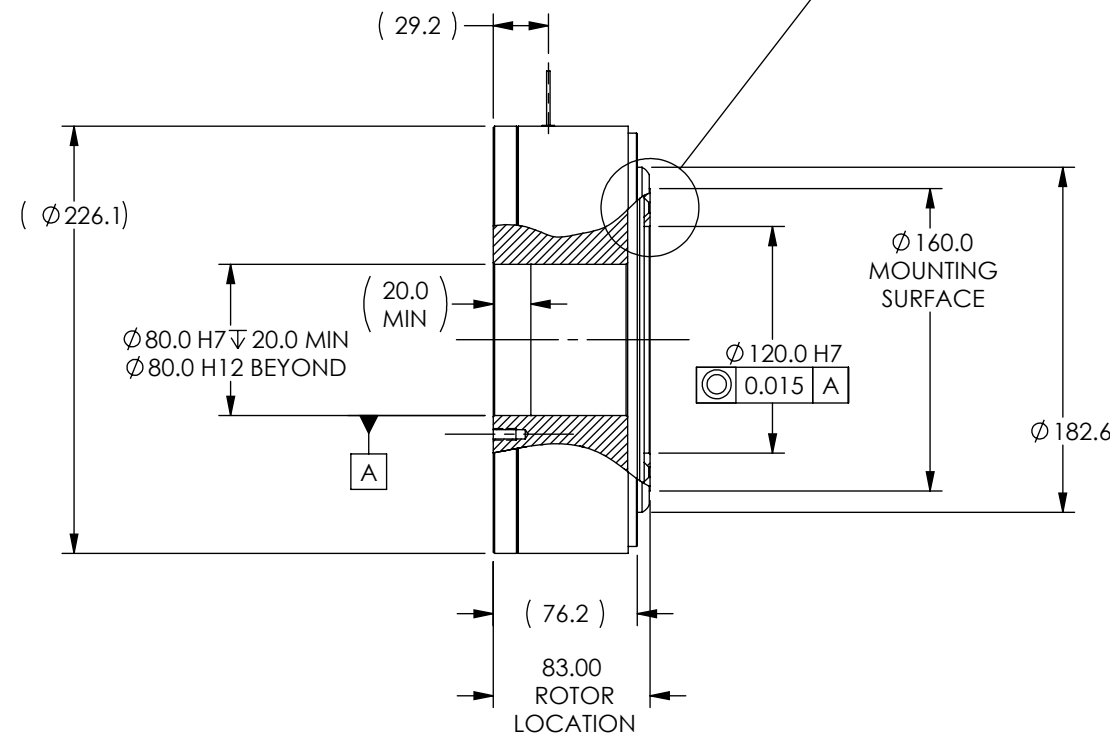
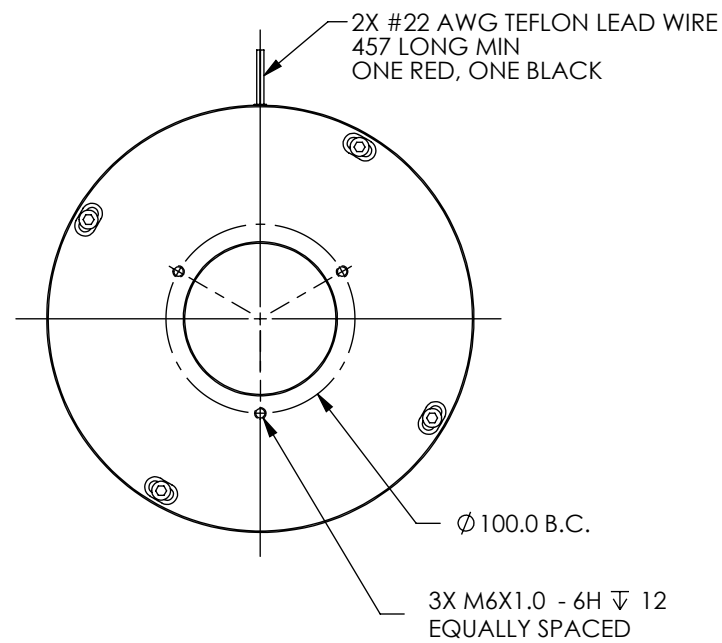
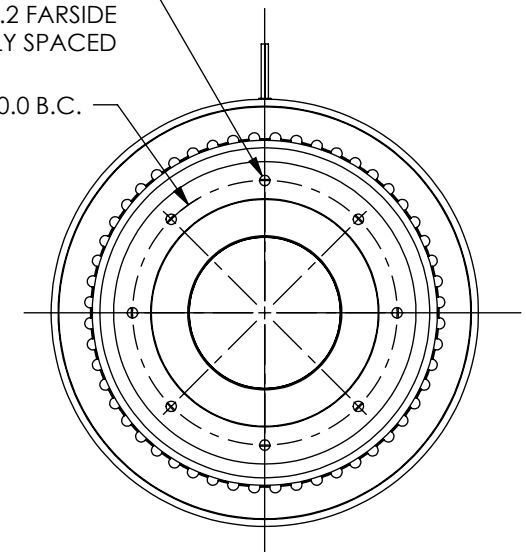
MODEL	COIL NUMBER	STOCK CODE	MINIMUM TORQUE AT RATED CURRENT (Nm)	RATED CURRENT (mA)	RESISTANCE ±10% @ 25°C (ohms)	VOLTAGE (Vdc)	NOMINAL POWER (watts)	MAXIMUM SPEED (RPM)	KINETIC POWER RATINGS	
									5 MINUTE (watts)	CONTINUOUS (watts)
LB-1750M	-2 (24 Vdc)	004137	12.0	500	52	26	13	1,800	1,200	350

SOLID MODEL AVAILABLE



(MOUNTING HOLES FOR M5 FLAT HEAD SCREWS)  
8X Ø 5.5 THRU WALL  
∇ Ø 10.2 FAR SIDE EQUALLY SPACED


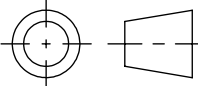
Ø 140.0 B.C.



3 DIMENSIONAL VIEW  
SCALE 1 : 4

**ALIGNMENT NOTES:**

- THE POLE/CASE ASSEMBLY AND THE ROTOR ARE SHIPPED AS SEPARATE ITEMS.
- IT IS THE RESPONSIBILITY OF THE MACHINE DESIGNER TO ASSURE PROPER ALIGNMENT OF THE MATING BRAKE PARTS IN THE FINAL ASSEMBLY.
- THESE COMPONENTS MUST BE MOUNTED SUCH THAT THE CONCENTRICITY AND PERPENDICULARITY BETWEEN THE ROTOR AND POLE DOES NOT EXCEED THE SPECIFIED TOLERANCES.

MATERIAL:	DESIGN	DTW	08/22/00		<b>MAGTROL INC.</b> 70 GARDENVILLE PKWY, W. BUFFALO, NEW YORK 14224-1322
	DRAWN	AJC	08/28/08		
FINISH:	CHECKED	-	-	TITLE	
	UNLESS OTHERWISE SPECIFIED: DIMENSIONS ARE IN MILLIMETERS, DIAMETERS CONCENTRIC: .08 TIR, FACES PERPENDICULAR: .08 INTERPRETATION PER ASME Y14.5M-1994 REMOVE ALL BURRS AND BREAK SHARP EDGES .13/.25 X 45°, ALL INSIDE CORNERS TO BE .5 R MAX. TOLERANCES: X ± .4            .XX ± .13 .X ± .25        ANG. ± 1° SURFACE FINISH 3.2 µm MAX. U.O.S.			LB-1750M LARGE BORE BRAKE	
THIRD ANGLE PROJECTION				USED ON: -	REV
THIS DRAWING AND SPECIFICATION CONTAINS PROPRIETARY INFORMATION TO MAGTROL INC. ANY DISCLOSURE OR REPRODUCTION OF THIS DOCUMENT WITHOUT WRITTEN AUTHORIZATION FROM MAGTROL INC. IS EXPRESSLY PROHIBITED				SIMILAR TO: 004112	A
				DWG. NO.	LB-1750M
				SIZE	2 OF 2
				SCALE	1:4
				SHEET #	2 OF 2