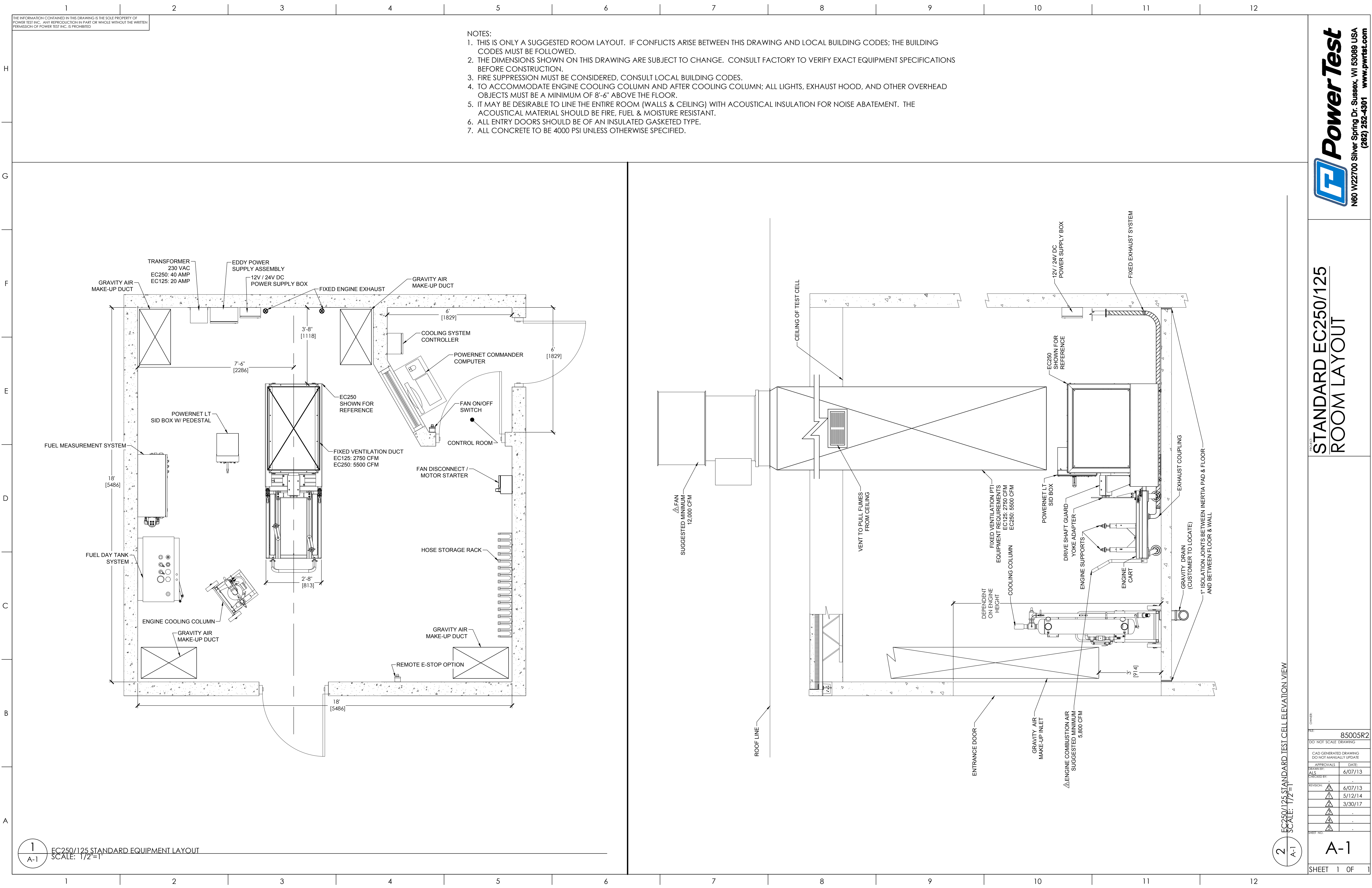


THE INFORMATION CONTAINED IN THIS DRAWING IS THE SOLE PROPERTY OF POWER TEST INC. ANY REPRODUCTION IN PART OR WHOLE WITHOUT THE WRITTEN PERMISSION OF POWER TEST INC. IS PROHIBITED.

NOTES:

1. THIS IS ONLY A SUGGESTED ROOM LAYOUT. IF CONFLICTS ARISE BETWEEN THIS DRAWING AND LOCAL BUILDING CODES; THE BUILDING CODES MUST BE FOLLOWED.
2. THE DIMENSIONS SHOWN ON THIS DRAWING ARE SUBJECT TO CHANGE. CONSULT FACTORY TO VERIFY EXACT EQUIPMENT SPECIFICATIONS BEFORE CONSTRUCTION.
3. FIRE SUPPRESSION MUST BE CONSIDERED, CONSULT LOCAL BUILDING CODES.
4. TO ACCOMMODATE ENGINE COOLING COLUMN AND AFTER COOLING COLUMN; ALL LIGHTS, EXHAUST HOOD, AND OTHER OVERHEAD OBJECTS MUST BE A MINIMUM OF 8'-6" ABOVE THE FLOOR.
5. IT MAY BE DESIRABLE TO LINE THE ENTIRE ROOM (WALLS & CEILING) WITH ACOUSTICAL INSULATION FOR NOISE ABATEMENT. THE ACOUSTICAL MATERIAL SHOULD BE FIRE, FUEL & MOISTURE RESISTANT.
6. ALL ENTRY DOORS SHOULD BE OF AN INSULATED GASKETED TYPE.
7. ALL CONCRETE TO BE 4000 PSI UNLESS OTHERWISE SPECIFIED.



1 EC250/125 STANDARD EQUIPMENT LAYOUT
SCALE: 1/2" = 1'

2 EC250/125 STANDARD TEST CELL ELEVATION VIEW
SCALE: 1/2" = 1'



STANDARD EC250/125
ROOM LAYOUT

OWNER:	
PROJECT:	85005R2
DO NOT SCALE DRAWING	
CAD GENERATED DRAWING DO NOT MANUALLY UPDATE	
APPROVALS:	DATE:
DRAWN BY: AJS	6/07/13
DESIGNED BY:	
REVISION:	
1	6/07/13
2	5/12/14
3	3/30/17
4	
5	
SHEET NO.:	
A-1	
SHEET 1 OF 1	