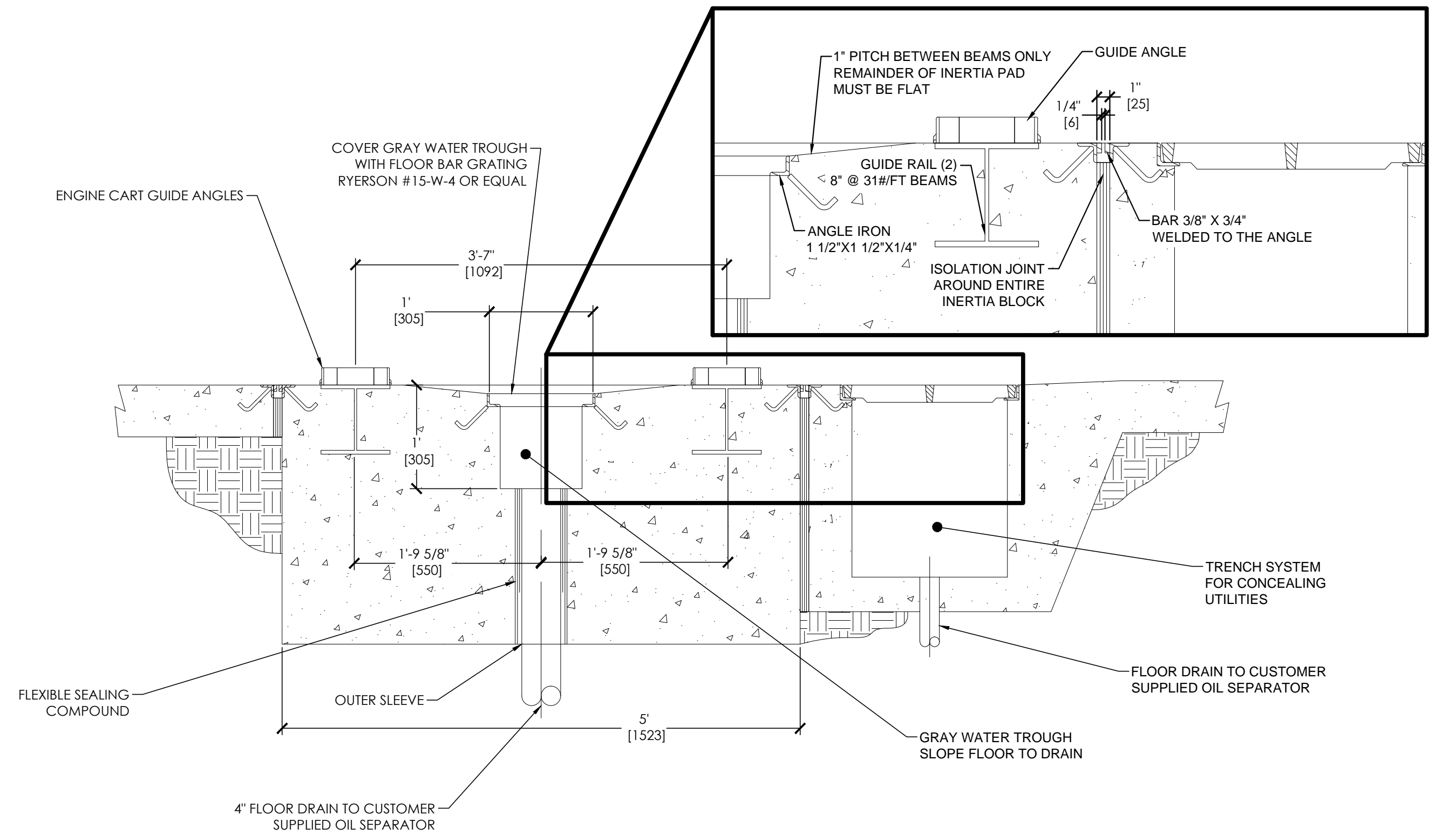


THE INFORMATION CONTAINED IN THIS DRAWING IS THE SOLE PROPERTY OF POWER TEST INC. ANY REPRODUCTION IN PART OR WHOLE WITHOUT THE WRITTEN PERMISSION OF POWER TEST INC. IS PROHIBITED.

NOTES:

1. THIS IS ONLY A SUGGESTED ROOM LAYOUT. IF CONFLICTS ARISE BETWEEN THIS DRAWING AND LOCAL BUILDING CODES; THE BUILDING CODES MUST BE FOLLOWED.
2. THE DIMENSIONS SHOWN ON THIS DRAWING ARE SUBJECT TO CHANGE. CONSULT FACTORY TO VERIFY EXACT EQUIPMENT SPECIFICATIONS BEFORE CONSTRUCTION.
3. FIRE SUPPRESSION MUST BE CONSIDERED. CONSULT LOCAL BUILDING CODES.
4. TO ACCOMMODATE ENGINE COOLING COLUMN AND AFTER COOLING COLUMN; ALL LIGHTS, EXHAUST HOOD, AND OTHER OVERHEAD OBJECTS MUST BE A MINIMUM OF 8'-6" ABOVE THE FLOOR.
5. TO ACCOMMODATE OPTIONAL ENGINE EXHAUST HOOD; THE CEILING HEIGHT MUST BE A MINIMUM OF 16'-0" CLEAR.
6. IT MAY BE DESIRABLE TO LINE THE ENTIRE ROOM (WALLS & CEILING) WITH ACOUSTICAL INSULATION FOR NOISE ABATEMENT. THE ACOUSTICAL MATERIAL SHOULD BE FIRE, FUEL & MOISTURE RESISTANT.
7. ALL ENTRY DOORS SHOULD BE OF AN INSULATED GASKETED TYPE.
8. CONSULT FACTORY FOR ASSISTANCE WITH CALCULATING WATER, AIR, FUEL, EXHAUST AND ELECTRICAL REQUIREMENTS.
9. ALL CONCRETE TO BE 4000 PSI UNLESS OTHERWISE SPECIFIED.

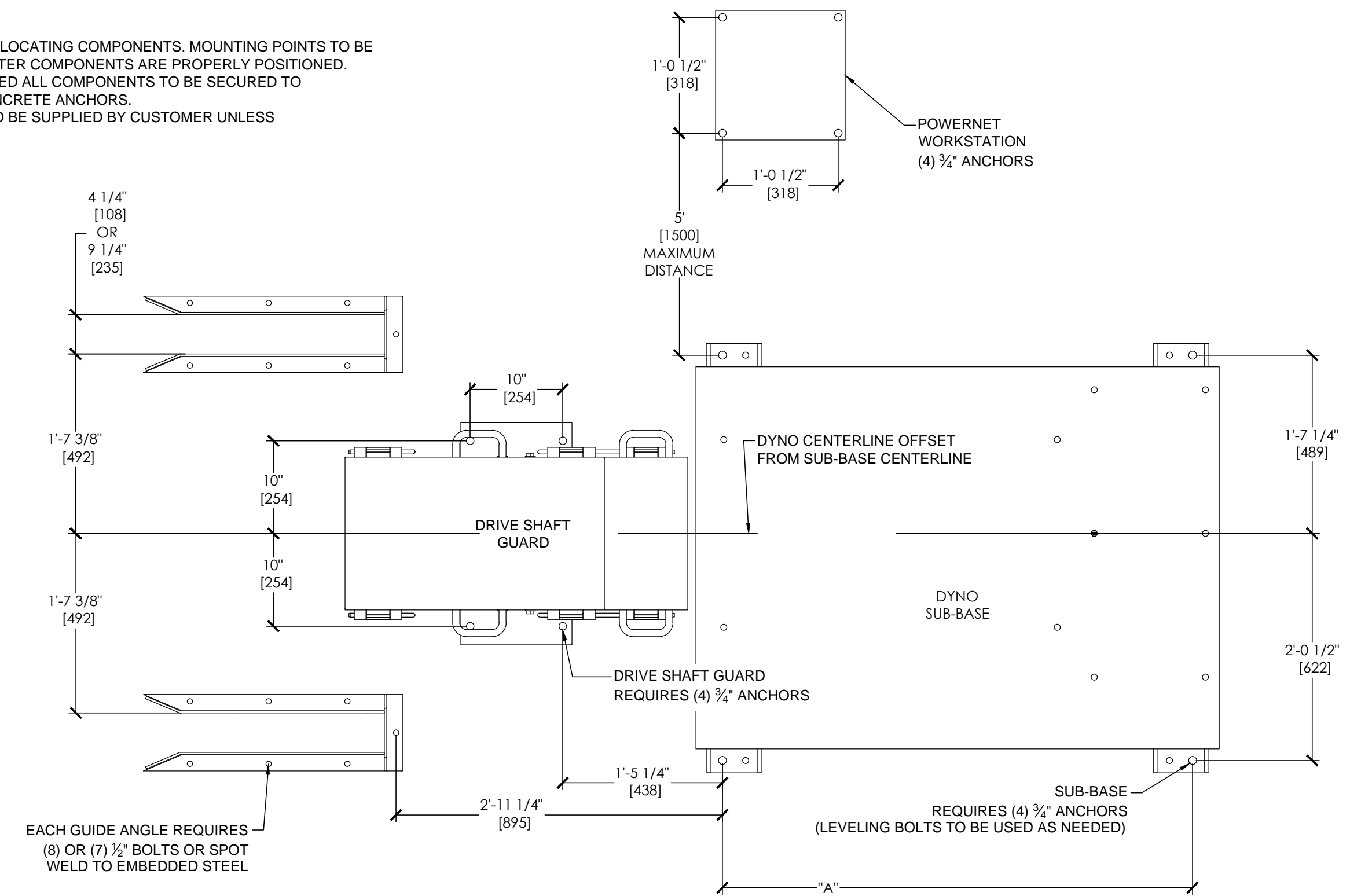


1
A-2
35X STANDARD INERTIA PAD SECTION VIEW
SCALE: 1"=1'

SUB-BASE	DIMENSION	
	"A"	
DYNO SIZE 35 X 06	50 3/4"	1289 mm
35 X 05	47 3/4"	1213 mm
35 X 04	44 3/4"	1137 mm
35 X 03	41 3/4"	1060 mm

NOTES:

1. DIMENSIONS GIVEN ARE FOR LOCATING COMPONENTS. MOUNTING POINTS TO BE TRANSFERRED TO FLOOR AFTER COMPONENTS ARE PROPERLY POSITIONED.
2. UNLESS OTHERWISE SPECIFIED ALL COMPONENTS TO BE SECURED TO ROOM FLOOR USING 3/4" CONCRETE ANCHORS.
3. ALL EQUIPMENT ANCHORS TO BE SUPPLIED BY CUSTOMER UNLESS OTHERWISE SPECIFIED.



2
A-2
35X STANDARD DIMENSIONAL INSTALLATION DETAIL
SCALE: 1"=1'