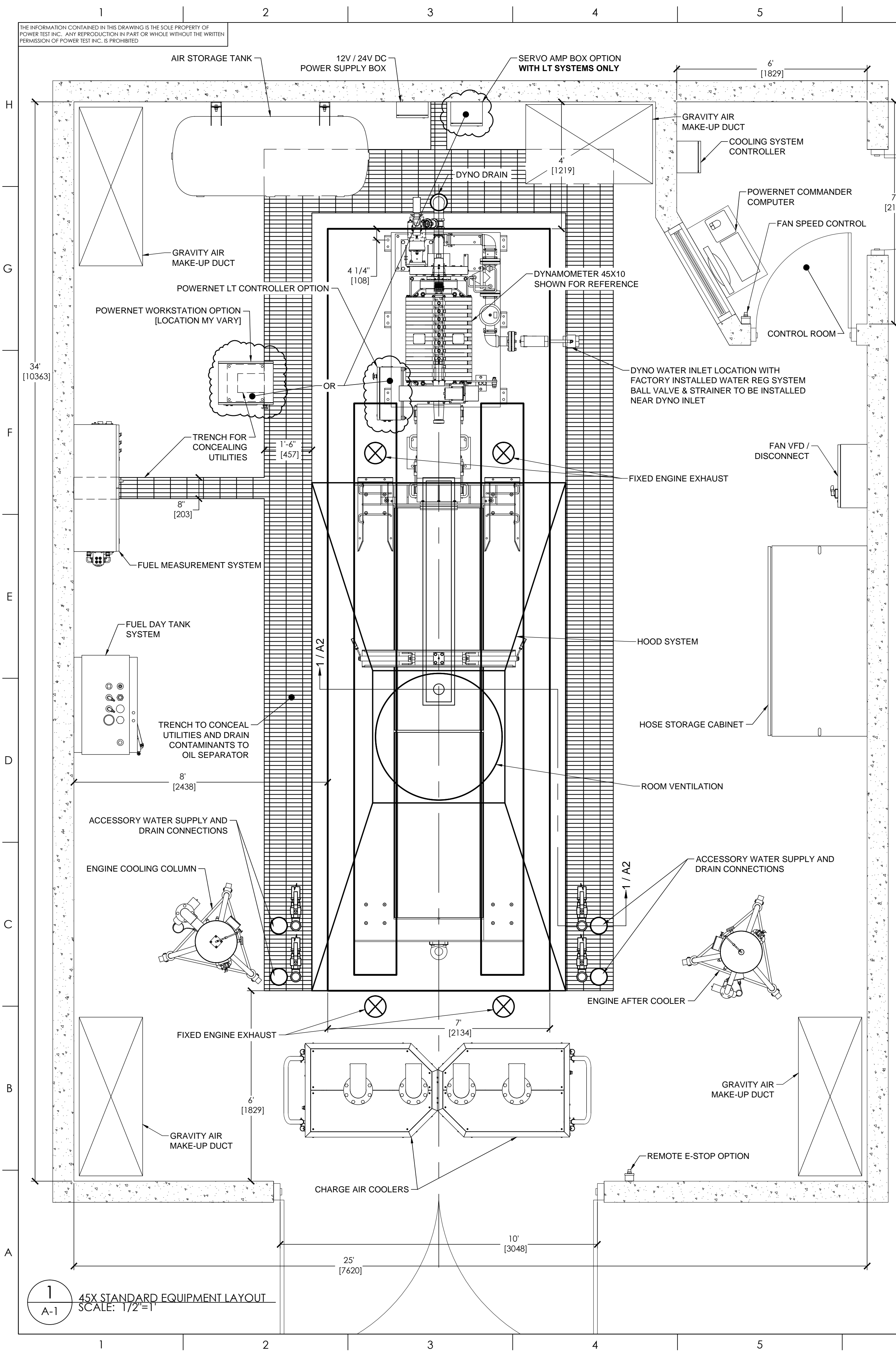
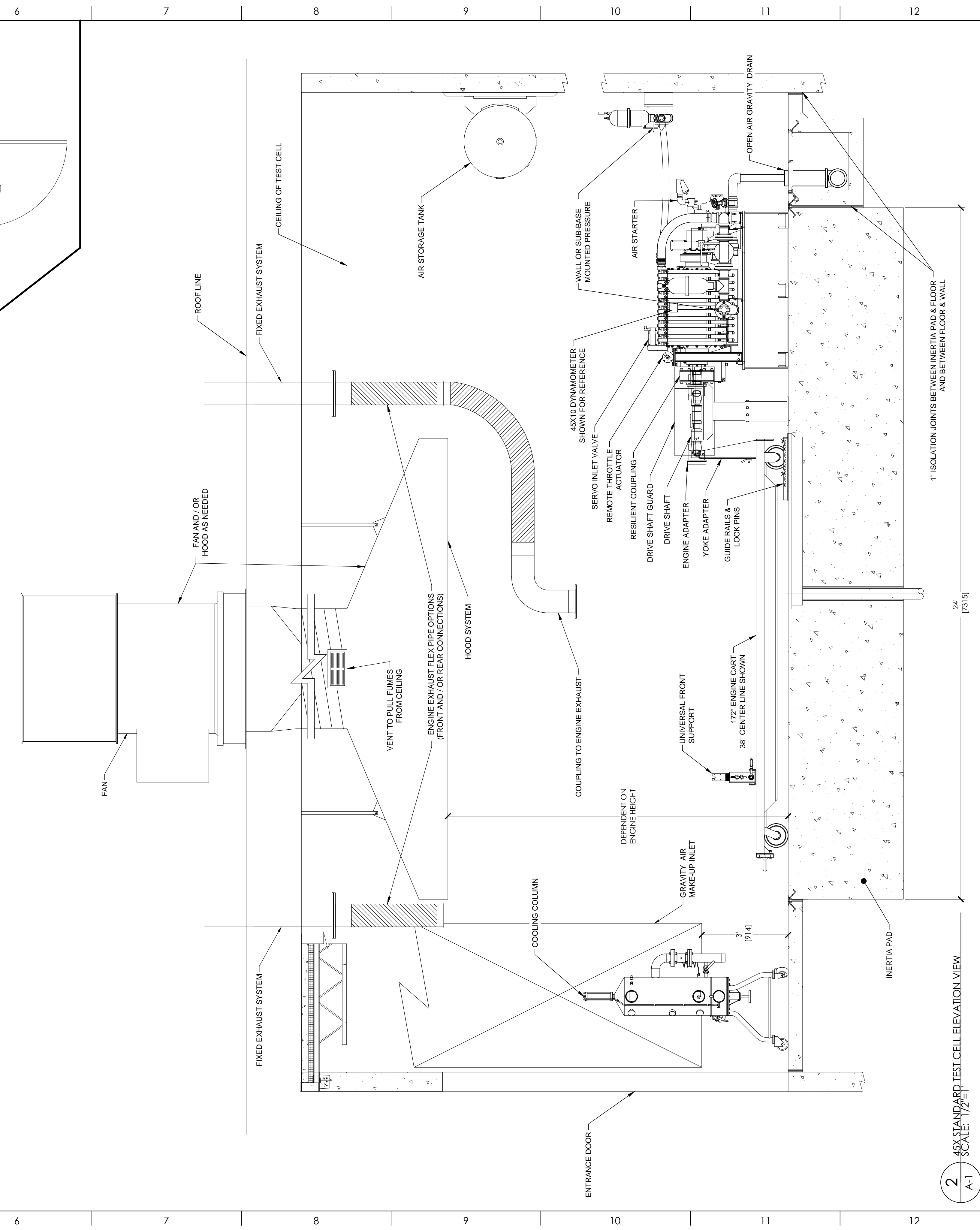


THE INFORMATION CONTAINED IN THIS DRAWING IS THE SOLE PROPERTY OF POWER TEST INC. ANY REPRODUCTION IN PART OR WHOLE WITHOUT THE WRITTEN PERMISSION OF POWER TEST INC. IS PROHIBITED.



1 45X STANDARD EQUIPMENT LAYOUT  
SCALE: 1/2" = 1'



2 45X STANDARD TEST CELL ELEVATION VIEW  
SCALE: 1/2" = 1'

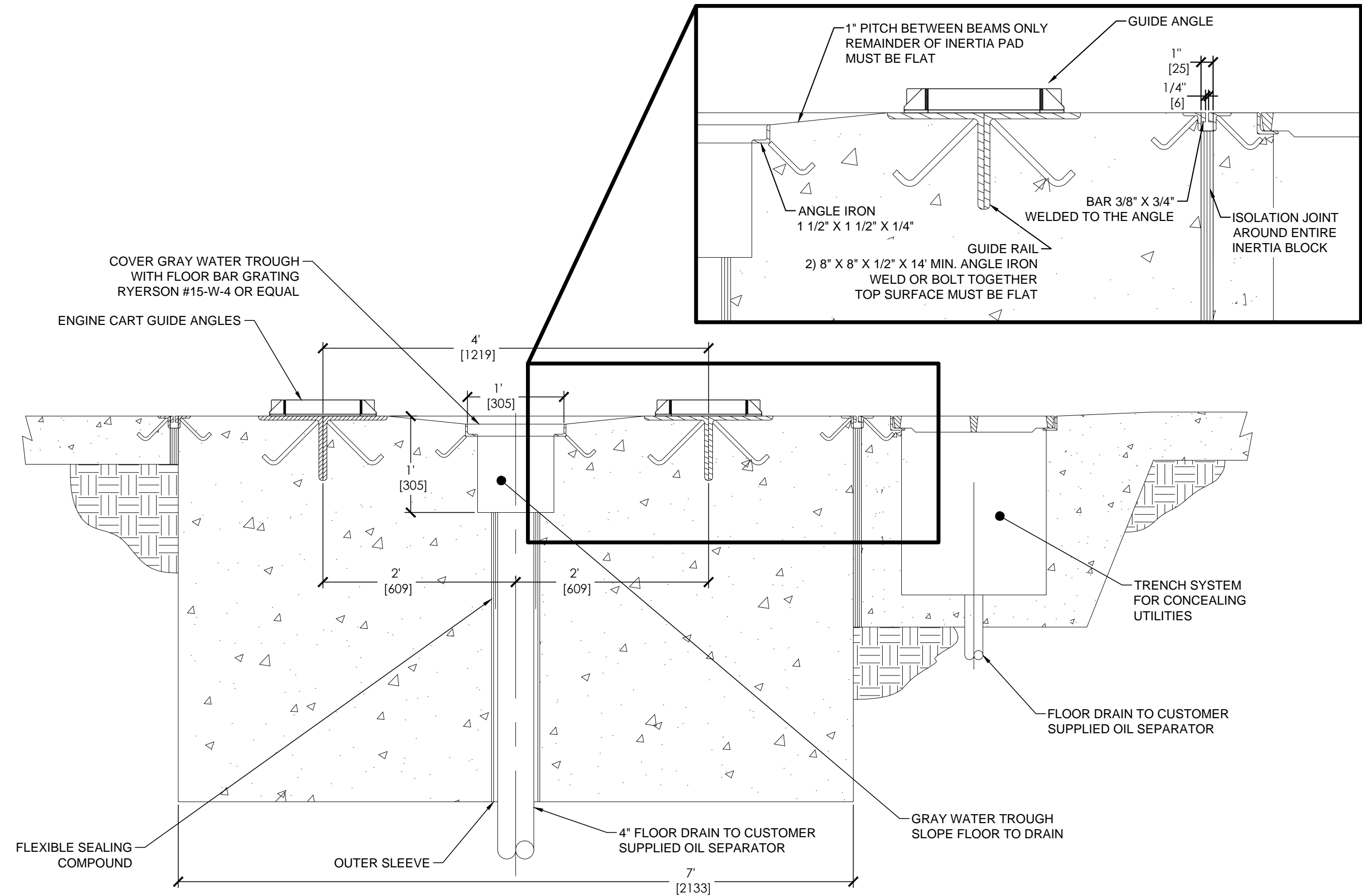
PROJECT: **STANDARD 45X EQUIPMENT LAYOUT**

REV:	85003R0
DO NOT SCALE DRAWING	
CAD GENERATED DRAWING	DO NOT MANUALLY UPDATE
APPROVALS:	DATE:
DAVIDA	6/6/13
REVISION:	
▲	
▲	
▲	
▲	
▲	
PREP NO.:	

THE INFORMATION CONTAINED IN THIS DRAWING IS THE SOLE PROPERTY OF POWER TEST INC. ANY REPRODUCTION IN PART OR WHOLE WITHOUT THE WRITTEN PERMISSION OF POWER TEST INC. IS PROHIBITED.

**NOTES:**

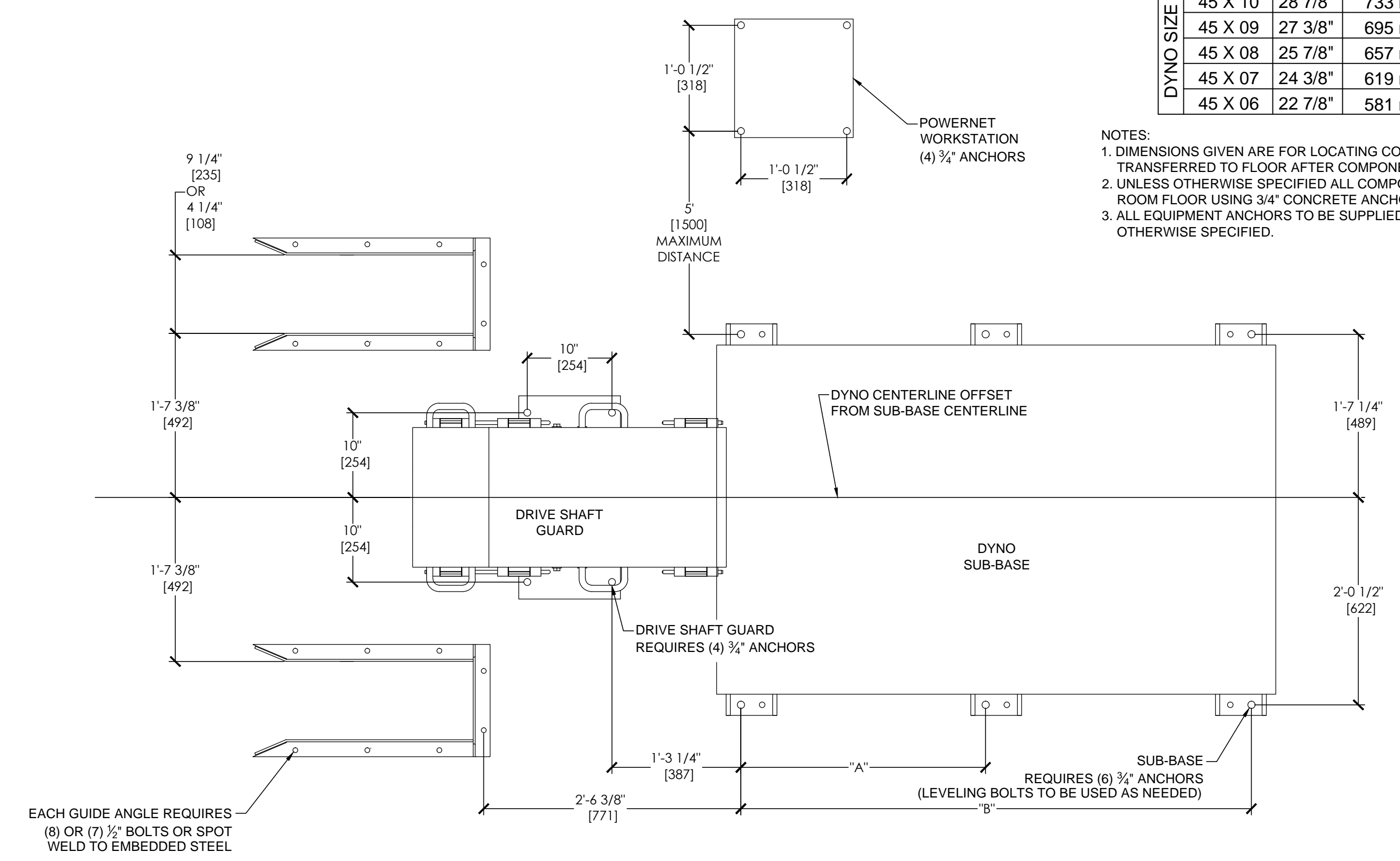
1. THIS IS ONLY A SUGGESTED ROOM LAYOUT. IF CONFLICTS ARISE BETWEEN THIS DRAWING AND LOCAL BUILDING CODES; THE BUILDING CODES MUST BE FOLLOWED.
2. THE DIMENSIONS SHOWN ON THIS DRAWING ARE SUBJECT TO CHANGE. CONSULT FACTORY TO VERIFY EXACT EQUIPMENT SPECIFICATIONS BEFORE CONSTRUCTION.
3. FIRE SUPPRESSION MUST BE CONSIDERED, CONSULT LOCAL BUILDING CODES.
4. TO ACCOMMODATE ENGINE COOLING COLUMN AND AFTER COOLING COLUMN; ALL LIGHTS, EXHAUST HOOD, AND OTHER OVERHEAD OBJECTS MUST BE A MINIMUM OF 8'-6" ABOVE THE FLOOR.
5. TO ACCOMMODATE OPTIONAL ENGINE EXHAUST HOOD; THE CEILING HEIGHT MUST BE A MINIMUM OF 16'-0" CLEAR.
6. IT MAY BE DESIRABLE TO LINE THE ENTIRE ROOM (WALLS & CEILING) WITH ACOUSTICAL INSULATION FOR NOISE ABATEMENT. THE ACOUSTICAL MATERIAL SHOULD BE FIRE, FUEL & MOISTURE RESISTANT.
7. ALL ENTRY DOORS SHOULD BE OF AN INSULATED GASKETED TYPE.
8. CONSULT FACTORY FOR ASSISTANCE WITH CALCULATING WATER, AIR, FUEL, EXHAUST AND ELECTRICAL REQUIREMENTS.
9. ALL CONCRETE TO BE 4000 PSI UNLESS OTHERWISE SPECIFIED.



1  
A-2 45X STANDARD INERTIA PAD SECTION VIEW  
SCALE: 1"=1'

DYNO SIZE	SUB-BASE DIMENSION			
	"A"	"B"	"A"	"B"
45 X 10	28 7/8"	60 1/4"	733 mm	1530 mm
45 X 09	27 3/8"	57 1/4"	695 mm	1454 mm
45 X 08	25 7/8"	54 1/4"	657 mm	1378 mm
45 X 07	24 3/8"	51 1/4"	619 mm	1302 mm
45 X 06	22 7/8"	48 1/4"	581 mm	1226 mm

- NOTES:**
1. DIMENSIONS GIVEN ARE FOR LOCATING COMPONENTS. MOUNTING POINTS TO BE TRANSFERRED TO FLOOR AFTER COMPONENTS ARE PROPERLY POSITIONED.
  2. UNLESS OTHERWISE SPECIFIED ALL COMPONENTS TO BE SECURED TO ROOM FLOOR USING 3/4" CONCRETE ANCHORS.
  3. ALL EQUIPMENT ANCHORS TO BE SUPPLIED BY CUSTOMER UNLESS OTHERWISE SPECIFIED.



2  
A-2 45X STANDARD DIMENSIONAL INSTALLATION VIEW  
SCALE: 1"=1'

REV	85003R0
DO NOT SCALE DRAWING	
CAD GENERATED DRAWING DO NOT MANUALLY UPDATE	
APPROVALS	DATE
DRAWN BY: DAVIDA	6/6/13
REVISION	
SHEET NO.	